

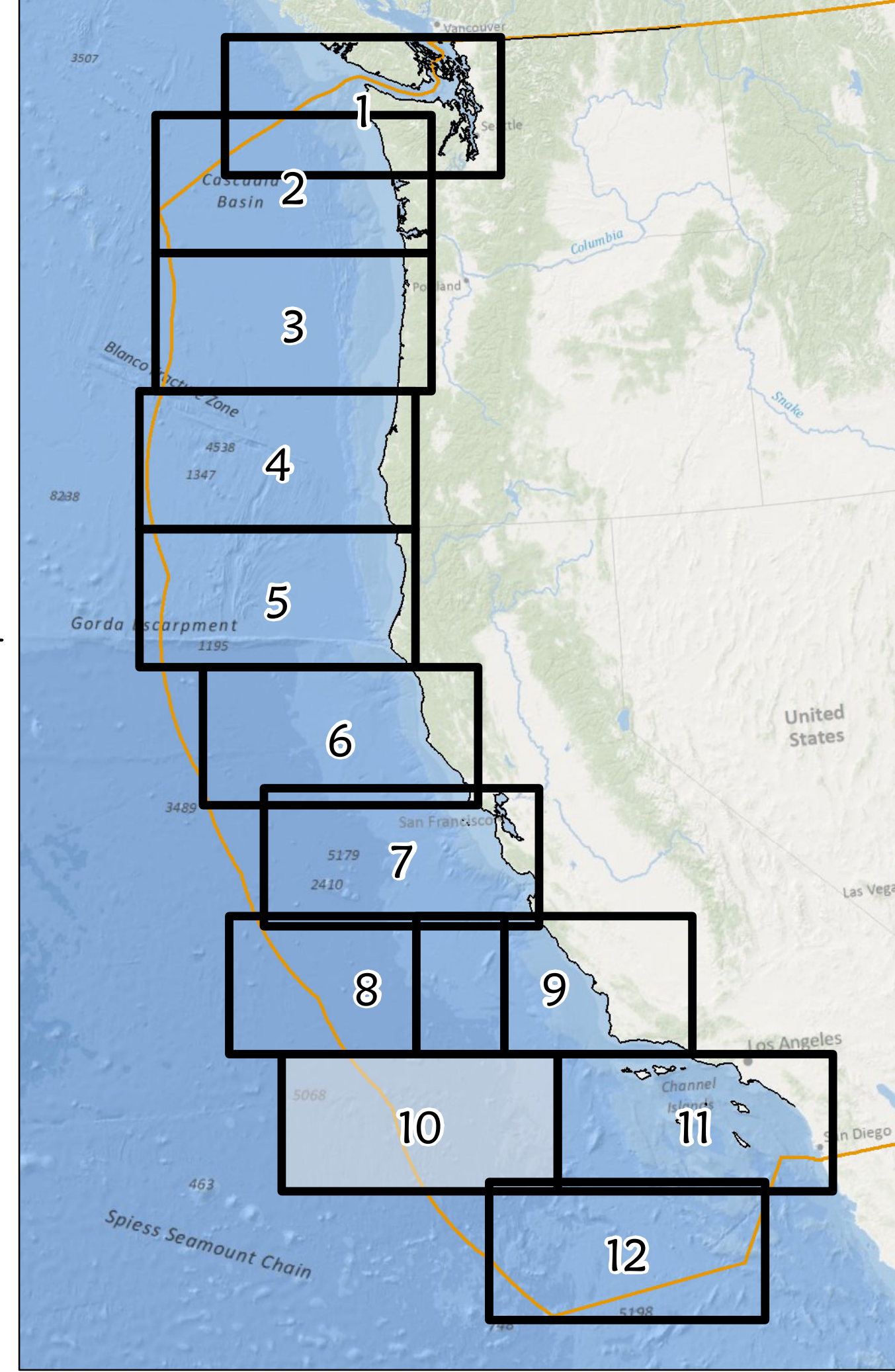
Seabed Habitat Type:  
Standardized According to Seabed Hardness

- Hard
- Mixed
- Soft

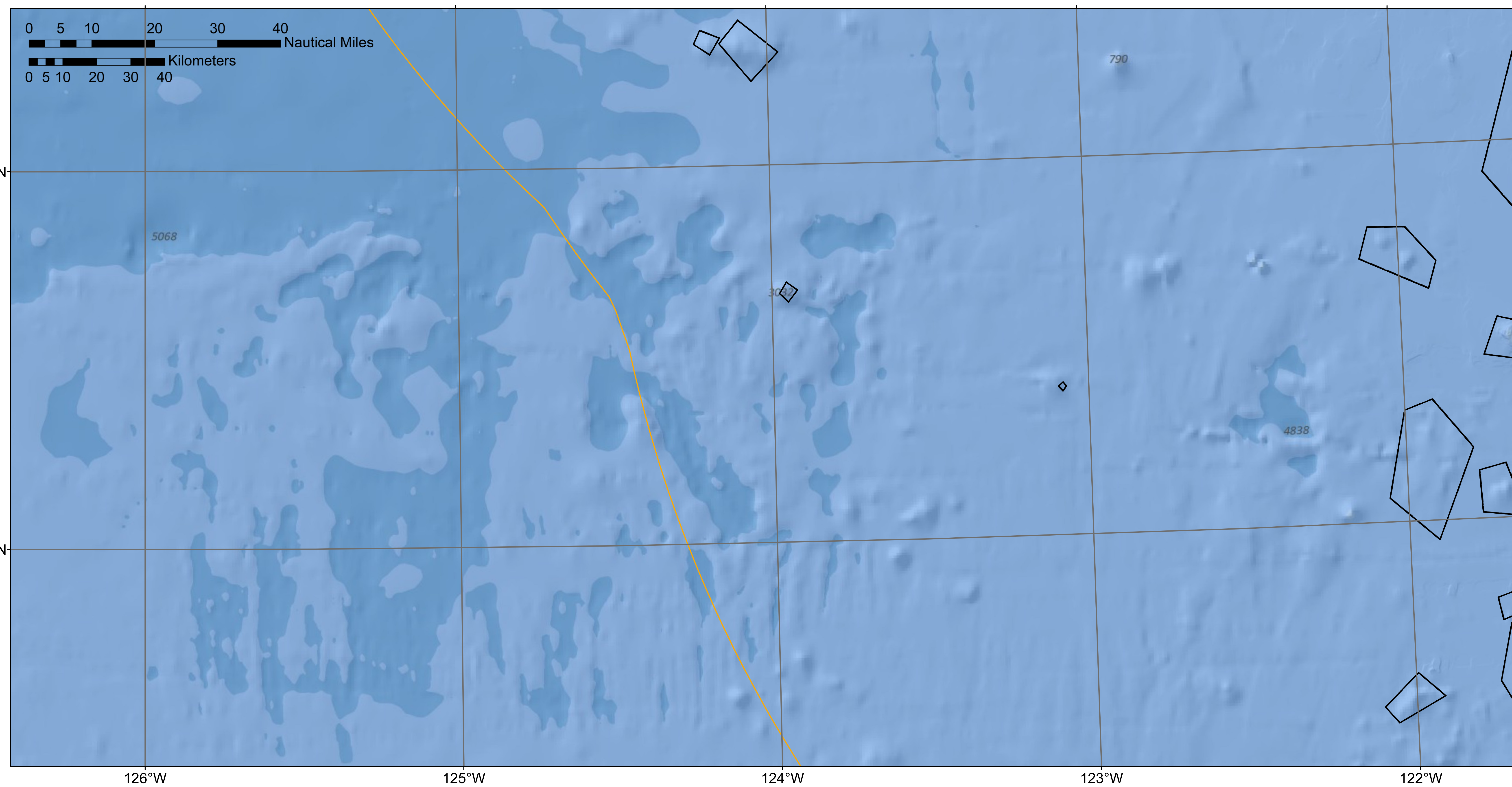
EFH Area Boundary  
 700 Fathom Closure Boundary

Projection: North America Albers Equal Area Conic  
 Geographic Coordinate System: GCS North American 1983  
 Horizontal Datum: North American Datum 1983  
 Spheroid: GRS 1980  
 False\_Easting = 0  
 False\_Northing = 0  
 Central\_Meridian = -126  
 First\_Standard\_Parallel = 32  
 Second\_Standard\_Parallel = 48  
 Latitude\_of\_Origin = 40  
 Linear Unit: Meter

1:500,000 scale



Seabed Habitat Map Distribution 2005 to 2011: Southern California Offshore 1



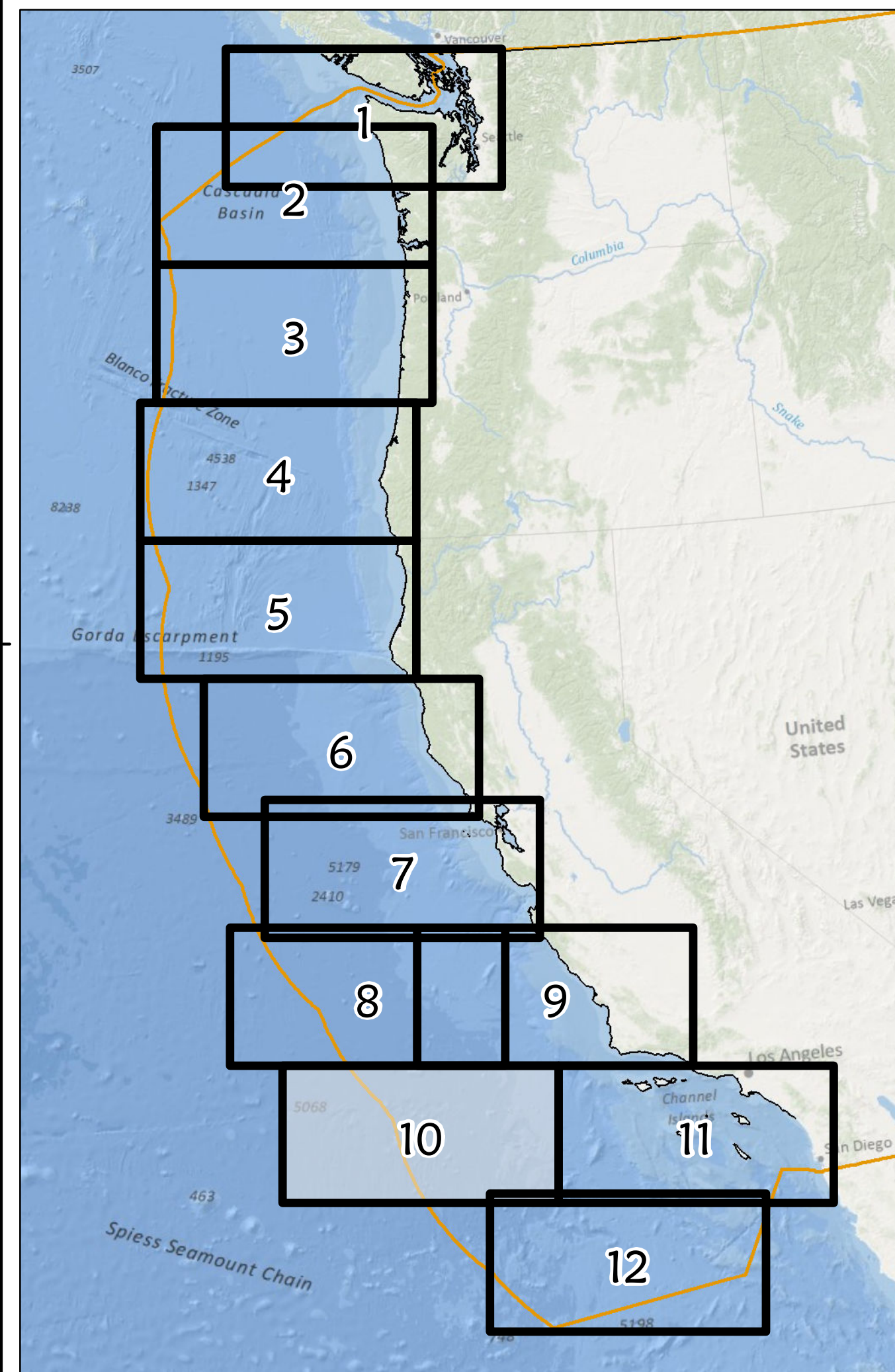
Seabed Habitat Type:  
Standardized According to Seabed Hardness

- Inferred Rock
- Hard
- Mixed
- Soft

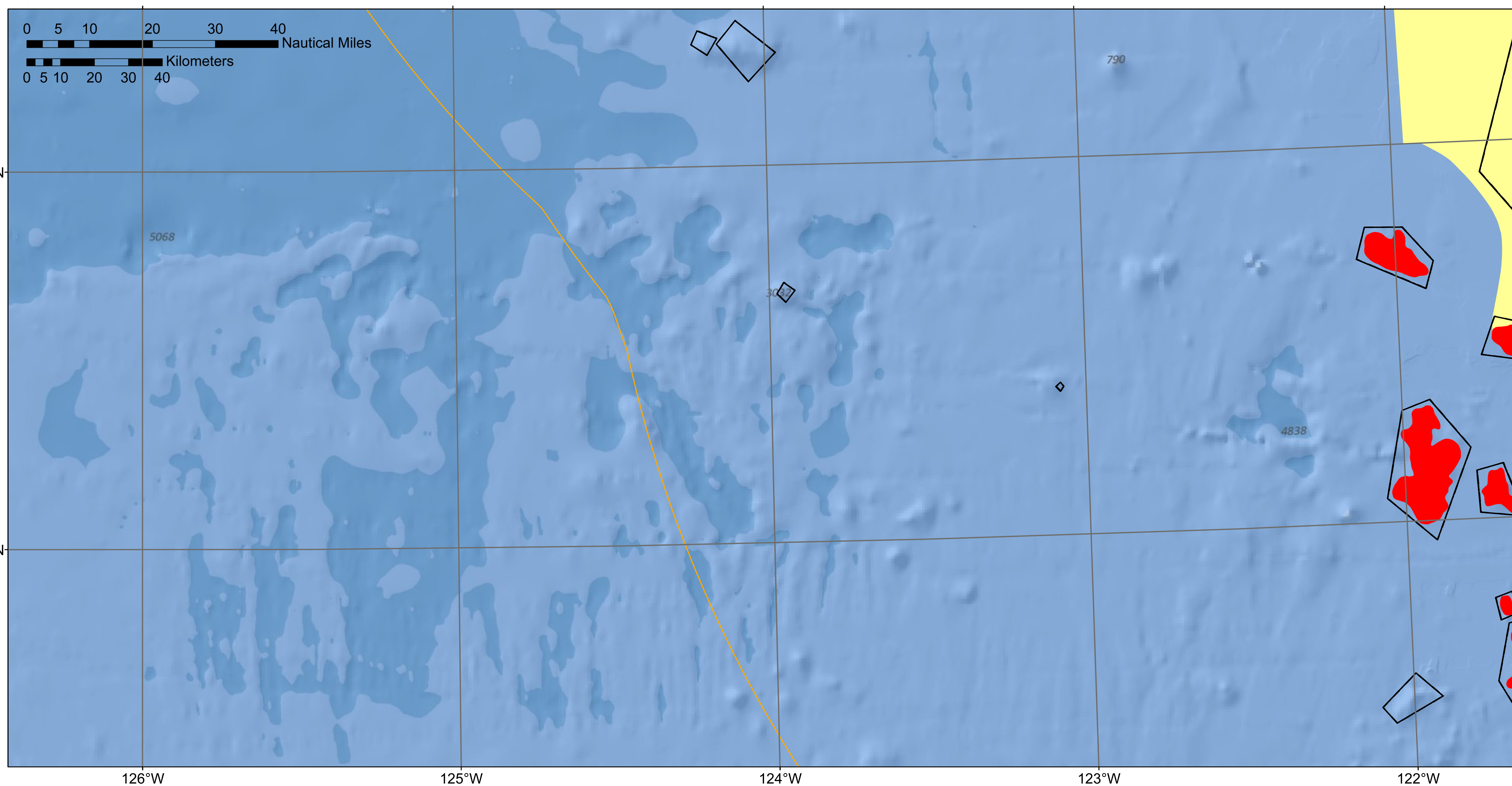
EFH Area Boundary  
 700 Fathom Closure Boundary

Projection: North America Albers Equal Area Conic  
 Geographic Coordinate System: GCS North American 1983  
 Horizontal Datum: North American Datum 1983  
 Spheroid: GRS 1980  
 False\_Easting = 0  
 False\_Northing = 0  
 Central\_Meridian = -126  
 First\_Standard\_Parallel = 32  
 Second\_Standard\_Parallel = 48  
 Latitude\_of\_Origin = 40  
 Linear Unit: Meter

1:500,000 scale



Aggregate Seabed Habitat Map Distribution 2011: Southern California Offshore 1



Seabed Habitat Type:  
Standardized According to Seabed Hardness

- Inferred Rock
- Hard
- Mixed
- Soft

EFH Area Boundary  
 700 Fathom Closure Boundary

Projection: North America Albers Equal Area Conic  
 Geographic Coordinate System: GCS North American 1983  
 Horizontal Datum: North American Datum 1983  
 Spheroid: GRS 1980  
 False\_Easting = 0  
 False\_Northing = 0  
 Central\_Meridian = -126  
 First\_Standard\_Parallel = 32  
 Second\_Standard\_Parallel = 48  
 Latitude\_of\_Origin = 40  
 Linear Unit: Meter

1:500,000 scale

